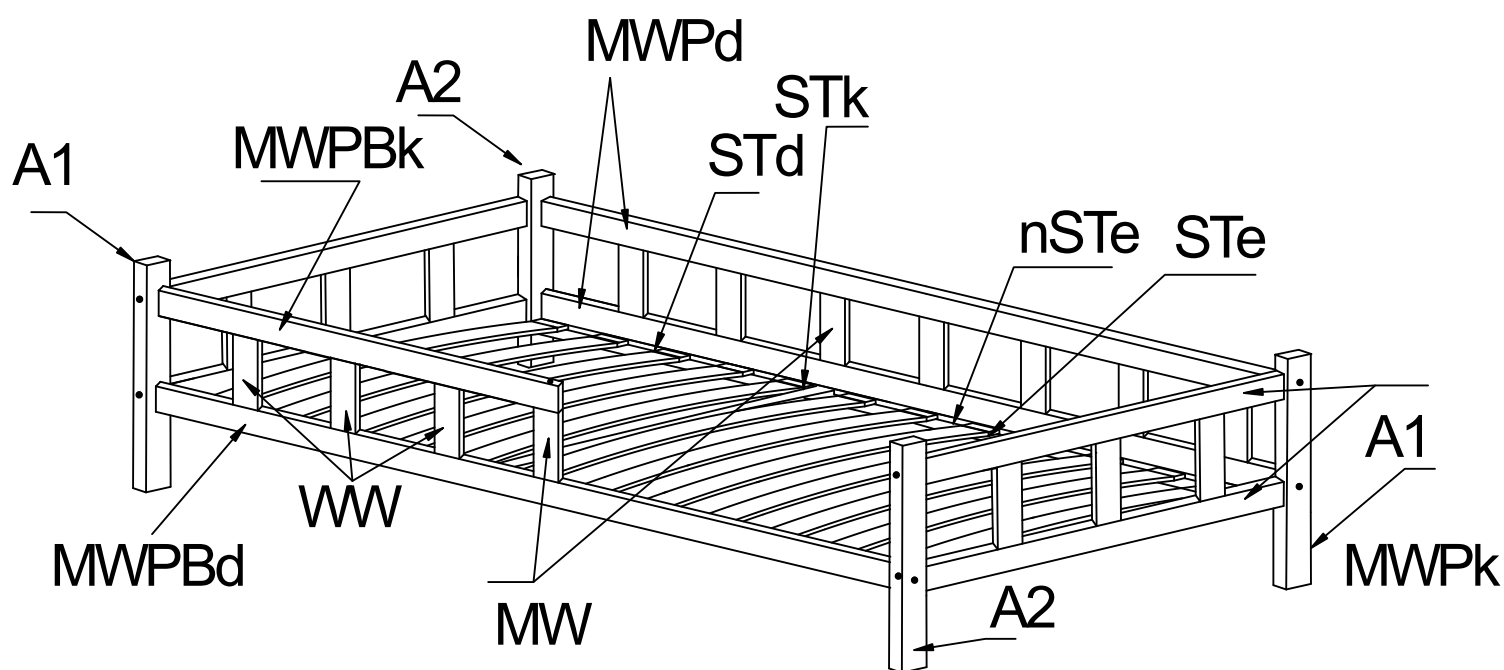
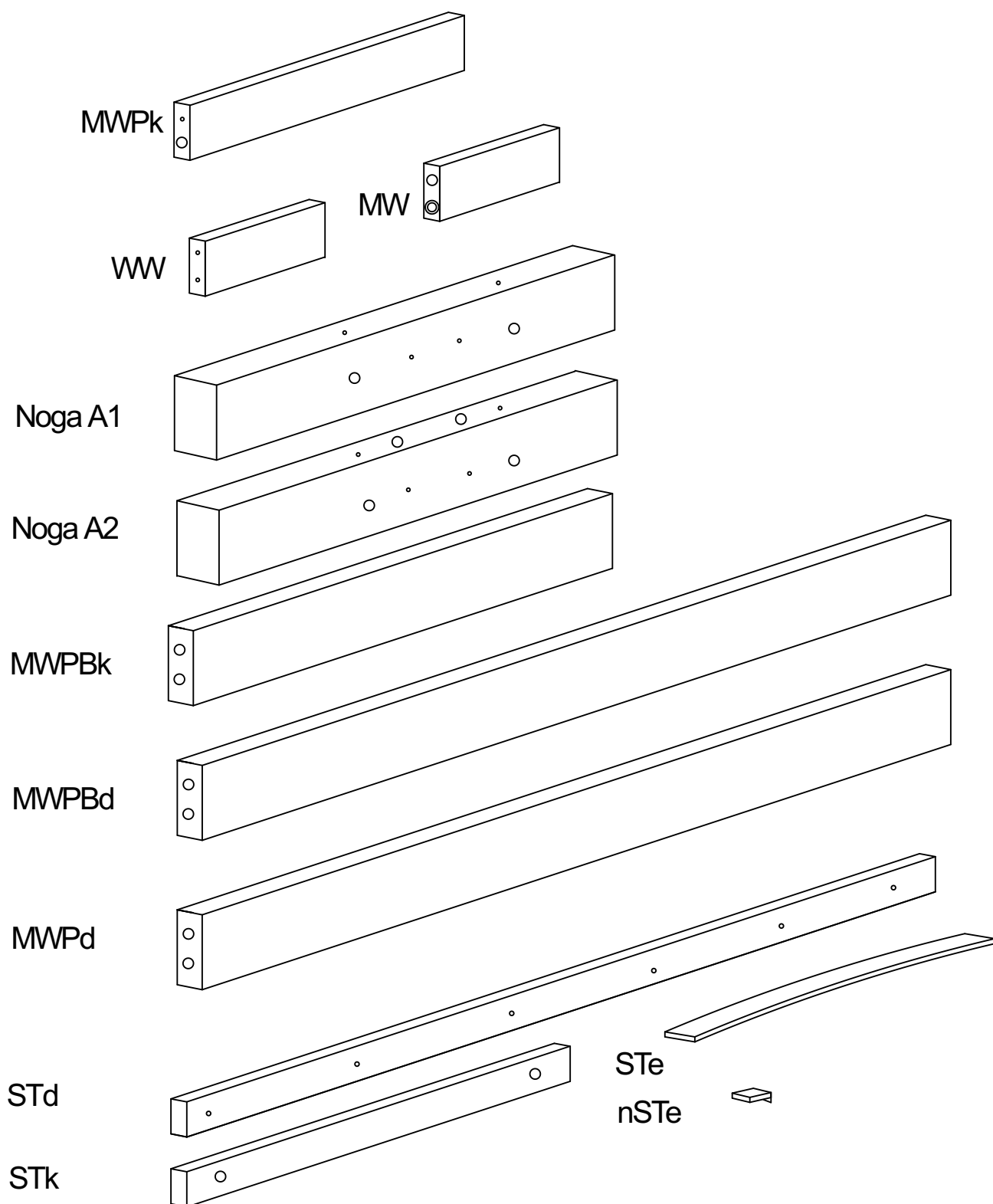


Návod na montáž  
Dětská postel se zábranou (plůtkem) - na nožkách



A1- 1x	MW- 2x
A2- 2x	WW- 16x
MWPk- 4x	STe- 16x
MWPd- 2x	STd- 2x
MWPBd- 1x	STk- 1x
MWPBk- 1x	STe- 32x



WDW4 100x Lepidlo KL

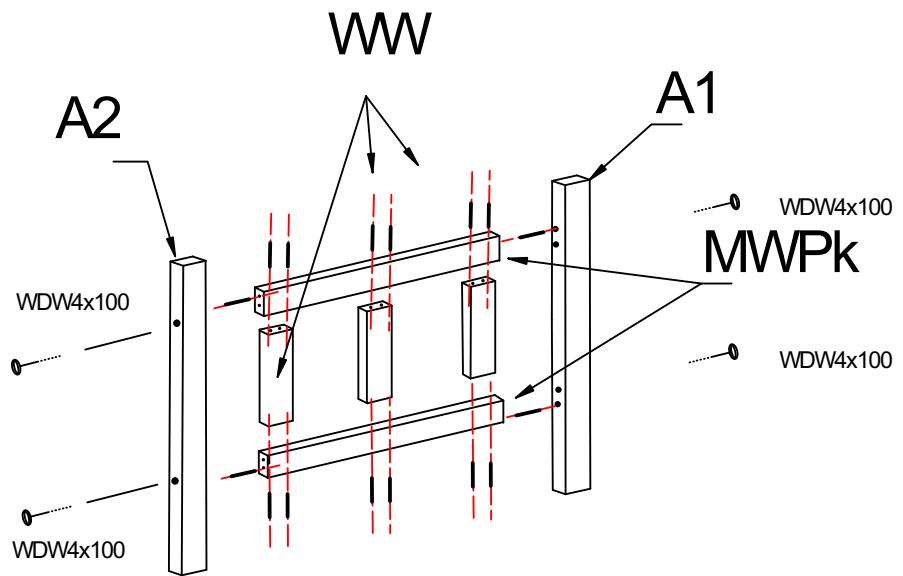
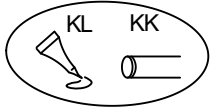
WDW4 90x Kolík KK

WRD35 Imbusový klíč KLC

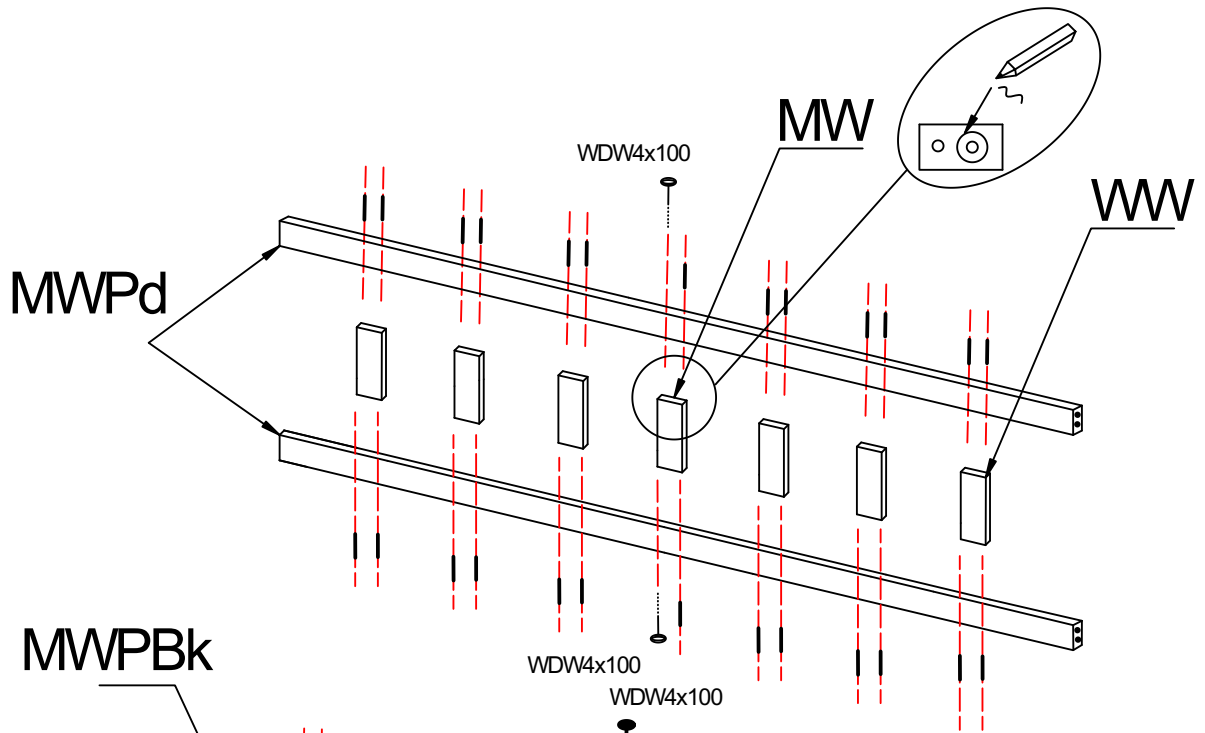
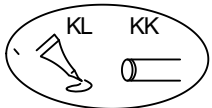
WRD16

1

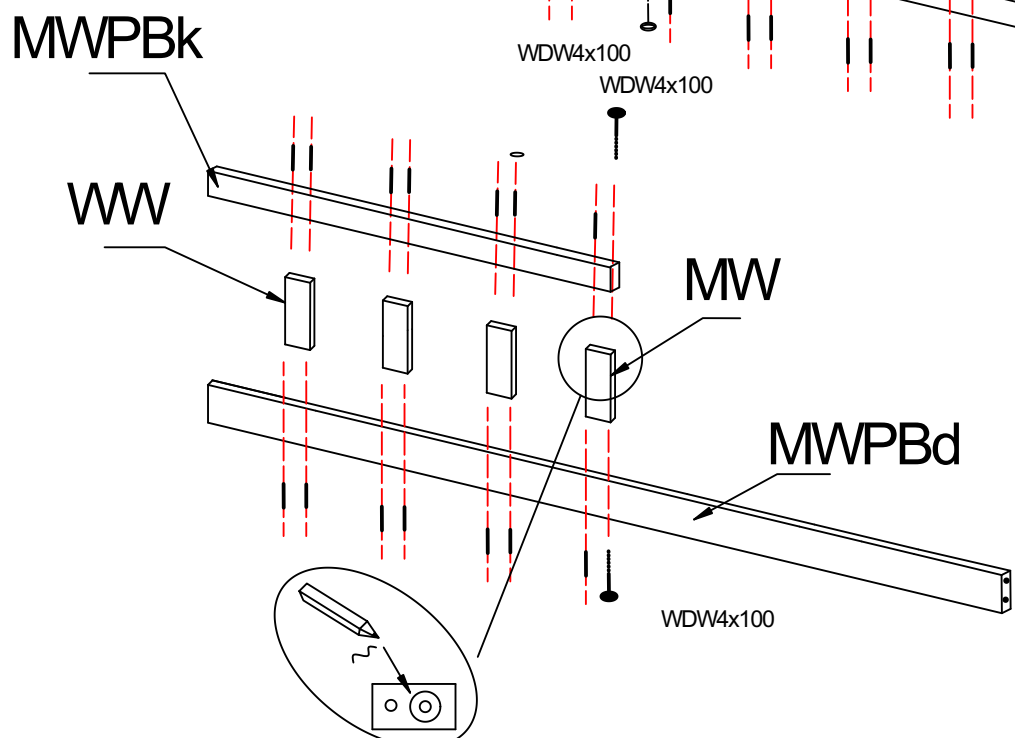
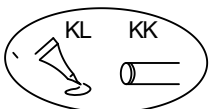
x2



2



3



WRD 35mm

